

# B-Ca (Boron-Calcium)

H. Okamoto

The B-Ca phase diagram in [Massalski2] was schematic. Figure 1 shows the B-Ca phase diagram calculated by [2007Sha]. The first principle calculation was employed in determining the thermodynamic parameters of the phases involved.

## Reference

2007Sha: S. Shang, T. Wang, and Z.K. Liu, Thermodynamic Modeling of the B-Ca, B-Sr, and B-Ba Systems, *Calphad*, 2007, 31, p 286-291

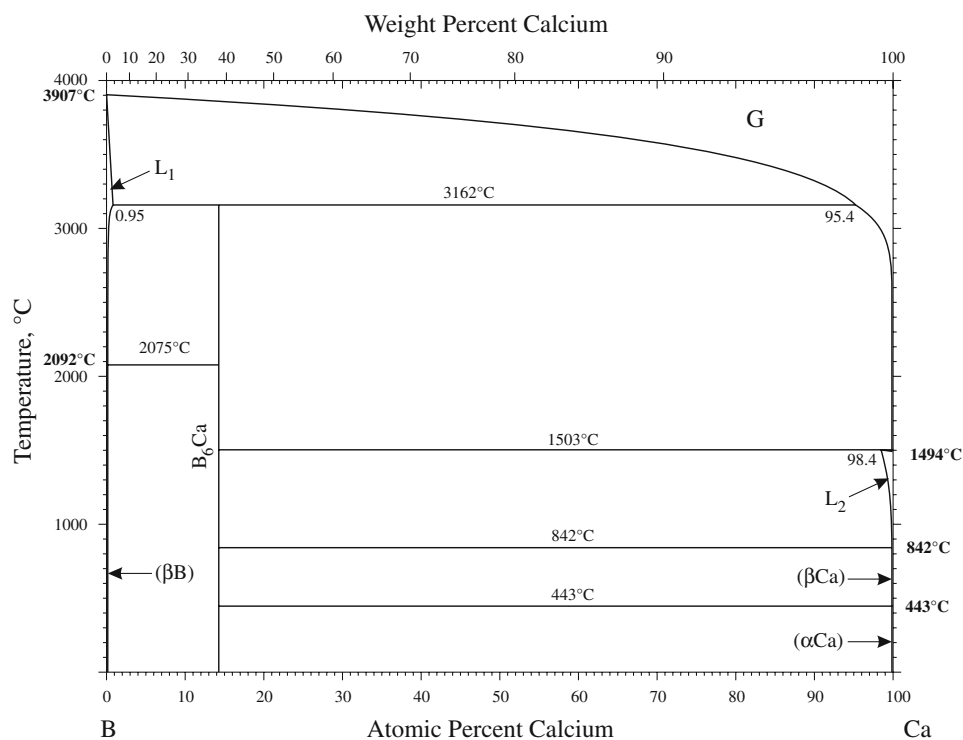


Fig. 1 B-Ca phase diagram